

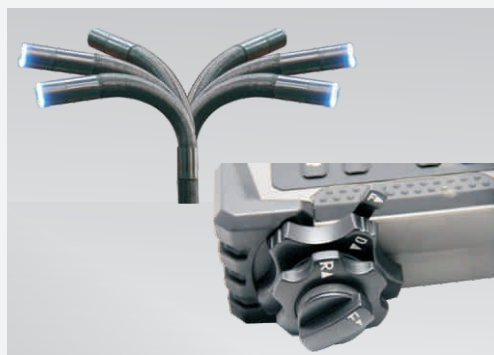
# D series industrial borescope

It is applicable to a wide range of industrial sectors such as special inspection, power, automobile, petrochemical, machinery, pipes, container manufacturing, suitable for small spaces video detection. The detections include turbine blade, combustor, heat exchange maintenance tubes, condenser, automobile engines, hydraulic, pneumatic fittings, steel pipe, casting, foreign objects inside the pressure vessel, clogging & defects. Also it can be used for anti-terrorism, search and rescue, archaeological finds and other small entrance detection.



## 5.7 inch high resolution LCD

5.7 inch LCD will show the real world , high-quality images , large LCD can clearly and accurately displayed minimal defects.



## Integrated control handle to control the four-way articulation

Probe section with four-way articulation function , the four-way articulation is carried out by four high tensile steel inside the wire through the host integrated control handle, the bending angle is more than 90 degree each way, and the bending control is flexible, the inside situation is clear at a glance and the handle is easy and comfortable to use.



## Replaceable handle

Operating handle could be replaced, according to different operating conditions, 4mm, 6mm, 8mm probes and 1.5m to 8m testing cable could be chosen.



## Extensions functions

Through replacement of handle the function can be expanded to big and long pipeline detection.

## Attachment



## Characters

- 5.8 inch high resolution LCD, clearly and brightly show the real images
- Replaceable camera, handle, one device with multi usages, save for customers.
- Easy to replace the battery
- Capture & video function , standard 8G SD memory card for easy scene evidence. ;
- Portable host, suitable for single person operation, could work for 5-6 hours after full charged.
- The testing cable is made of several levels tungsten braid, wear-resistant, waterproof, anti-oil , anti- acid minor corrosion.

## Main parameters

Series	D4150/4300	D6150/6300	D8150/8300/8600/8800/81000
Art.Nr.	1D0612/1D0613	1D0448/1D0449	1D0380/1D0391/1D0399/1D0408
Monitor size	5.7"	5.7"	5.7"/5.8"
FOV	>90°	>90°	>90°
Pixels	350,000	410,000	440,000
camera dia.	4.5mm	6mm	8.4mm
DOF	8mm~80mm	8mm~80mm/15mm~∞	8mm~80mm/15mm~∞/25mm~∞
Testing cable length	1.5m/3m	1.5m/3m	1.5m/3m/6m/8m/10m
Standard Storage	8GB	8GB	8GB
Articulaion	4-way	4-way	4-way
Waterproof	IP65	IP65(IP67optional)	IP65(IP67optional)



## Applications

