

BRICK - MAGNETIC CRAWLER

The Brick Crawler system is a lightweight, low profile and rugged system designed for fast and reliable tank thickness monitoring and profiling. The height of the scanner is as low as 70 mm and can work also on convex or concave surfaces having diameter of 2 meters which allows the use on ASTs, Towers, Ship hulls, Spheres both from inner or outer surfaces. The 4 wheel drive (4 independent motors) allows to easily jump on courses welds and allows the use on riveted tanks up to 12 mm thickness. The total attractive force of the magnetic wheel is 500 N. The complete system fits in two rugged cases making travel simple.



Features

- Lightweight – scanner is 4,5 kg
- Portable – entire system fits in two travel cases
- Battery – up to 8 hours full time usage with internal battery and 12 additional hours with optional external battery pack
- Fast – Scan speed is up to 100 mm/s
- Magnetic wheels – up to 500 N attractive force
- Easy drive - Runs on vertical surface, horizontal and concave or convex surface starting from 2 m diameter, 360° steering on spot
- Rugged – Stainless steel full body frame
- Ce conformity certification

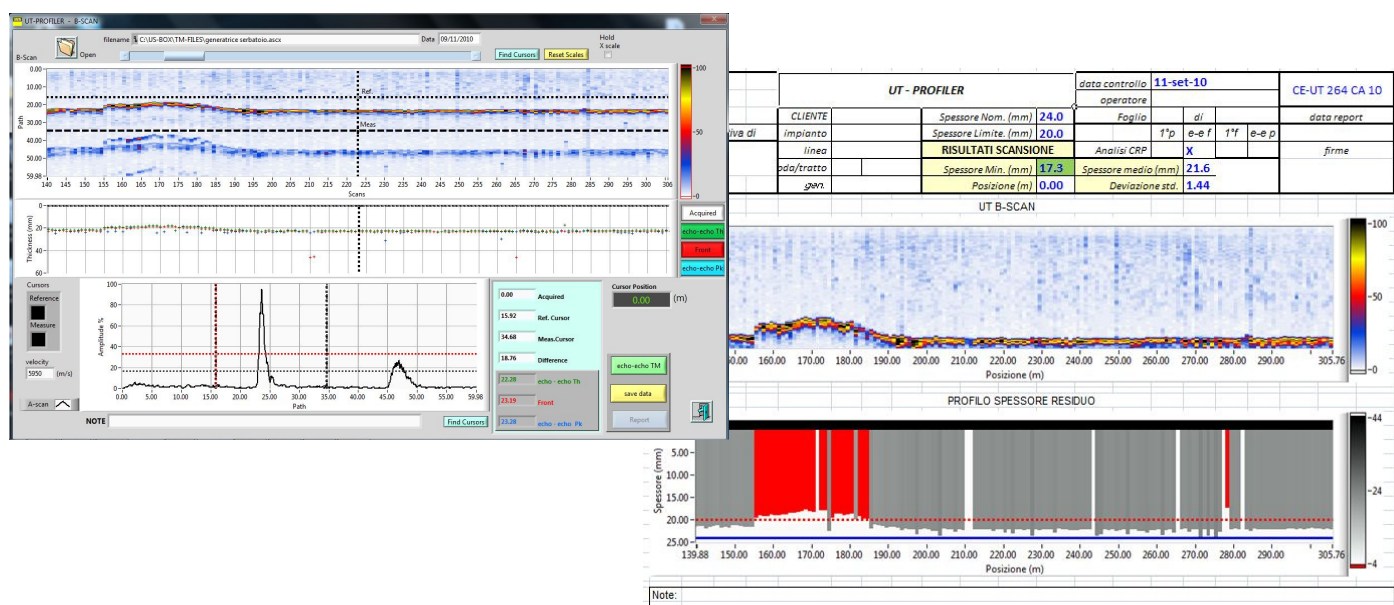
Includes

- Magnetic wheel Crawler
- 1 Axis motor controller with joystick
- Probe gimble with probe
- Power supply with integrated battery
- Operating software compatible with Windows XP, Vista & 7 32Bit.
- 25 m umbilical with irrigation and 3 UT lines
- Water reservoir with integrated pump

Accessories

- Spare Motor kit
- Rechargeable battery pack
- Wide range of probes

UT PROFILER



The UT-PROFILER is an advanced B-Scan system specifically designed for thickness profiling of components like tanks, columns, ship hulls to be used with crawlers with encoded or free running data acquisition. The software includes full UT parameters and encoding management. The measuring mode allows Automatic Gain Control capability in order to compensate signal amplitude variation. Calibration can be performed on multiple echoes in order to compensate coating thickness. Coating Removal Processing allows to extract “paint net” measurement on both flank and peak measurement criteria. Fast Excel report output is included in the package. The software can be customized upon specific request or other applications. Compatible with all Windows operating systems (32 Bit).

Main Features

- USB 2.0 interface (including power supply)
- Square wave pulser (25-2000 ns) 230 V
- PRF up to 20 KHz
- 100 dB receiver (0,1 Step) with AGC
- Bandwidth: 0,5 to 25 MHz
- Pulse-echo and Pitch catch
- A/D converter 12 Bit 80 MHz
- 2 encoder inputs
- CRP (coating removal processing)
- Intuitive commands and keys
- Fast data export to Excel and .txt

Includes

- UT-Board and USB cable
- UT-PROFILER full package
- 1 Hardware protection key
- UT PROFILER viewer free installation
- Software installation USB key
- Manual
- Requires MS Office Pro

Accessories/upgrade

- 1 Year subscription for upgrades including service and remote assistance.
- Training on site